

# The Lobster Game



## Materials:



- Game Board (page 2)
- Nature Cards (page 3)
- One Dice (Die)
- One game marker for each player  
(use coins or other game pieces you may have at home)

## Object of Game:

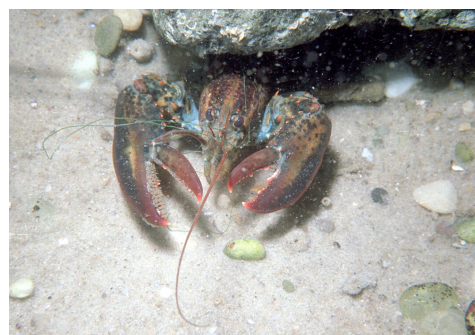
You are a marine fisheries manager. Your job is to manage and monitor the lobster population in Long Island Sound. You will determine harvest limits and conduct survey tows to determine lobster populations. Good Luck!

## Directions:

You will need to print out the gameboard and the nature cards. They are found on pages two and three.

Cut out each nature card and place face down on special space on game board. Place your game markers at the start location on the board.

Each player takes turns rolling the die and moves their marker the number of spaces on die. Follow directions on space you landed on. After moving marker the next person rolls. Continue game until one player reaches finish line.



**start**

Move ahead two spaces

1

2

3

Environmental card

4

5

6

7

Environmental card

move back two spaces

8

9

10

11

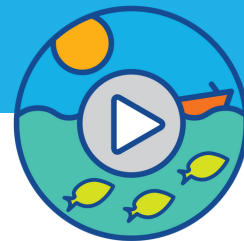
Environmental card

**finish**

12

13

14



### Environmental Card

Survey tows show increase in number of females carrying eggs from last year **move ahead 3 spaces**

### Environmental Card

**Low dissolved oxygen levels killing many lobsters move back 2 spaces**

### Environmental Card

**Shell disease kills lobsters move back one space**

### Environmental Card

Lobster boats report a good harvest **move ahead 3 spaces**

### Environmental Card

**warm water have causes lobsters to move to colder water areas move back two spaces**

### Environmental Card

Survey shows millions of juvenile lobsters **move ahead 2 spaces**

### Environmental Card

Lobster boat catches a rare blue lobster **move ahead 3 spaces**

### Environmental Card

survey shows shellfish population down **reduce potential food for lobsters move back 3 spaces**

### Environmental Card

DEC and lobster boat captains agree on new lobster size limit **move ahead 3 spaces**

### Environmental Card

Heavy rains cause major stormwater pollution resulting in poor water quality **move back 3 spaces**