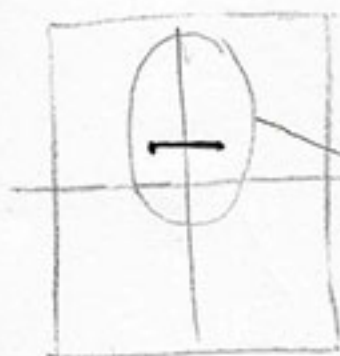


# How to DRAW A HORSESHOE CRAB



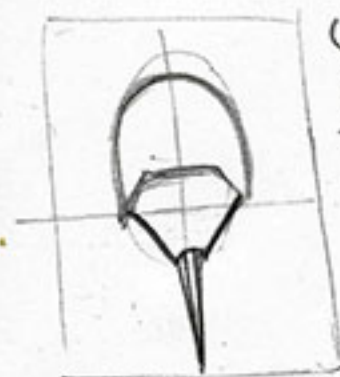
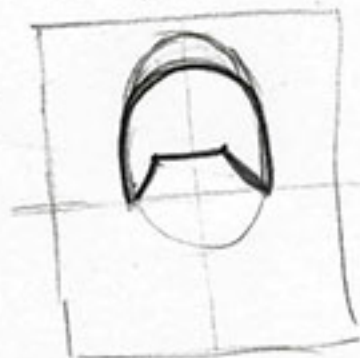
1. DRAW VERY LIGHT LINES DIVIDING YOUR PAPER IN  $\frac{1}{2}$  BOTH VERTICALLY & HORIZONTALLY.

2. DRAW AN OVAL STARTING CLOSE TO THE TOP OF THE PAPER TO JUST PASS THE HALF WAY MARK.

3.  $\frac{3}{4}$  OF THE WAY DOWN THE OVAL DRAW A LINE STARTING  $\frac{1}{4}$  WAY IN & ENDING  $\frac{1}{4}$  WAY IN FROM THE OVAL'S EDGE.

4. DRAW A DOWNWARD OUTWARD LINE FROM EITHER SIDE OF THE LINE ENDING WHERE THE HALF WAY MARK AND THE OVAL MEET.

5. SHAPE THE HEAD BY ROUNDING OUT THE TOP A BIT MORE.



6. DRAW IN THE ABDOMEN BY ADDING A LINE ON EACH SIDE OF THE OVAL TOWARD THE VERTICAL LINE

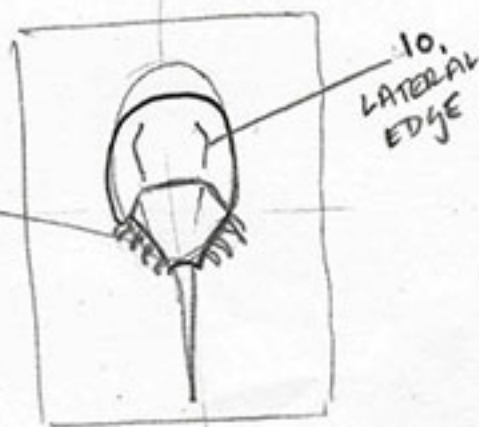
7. ADD A CURVED LINE JOINING THE SIDES OF THE ABDOMEN

8. MAKE A LONG NARROW TRIANGLE COMING FROM CURVED LINE.

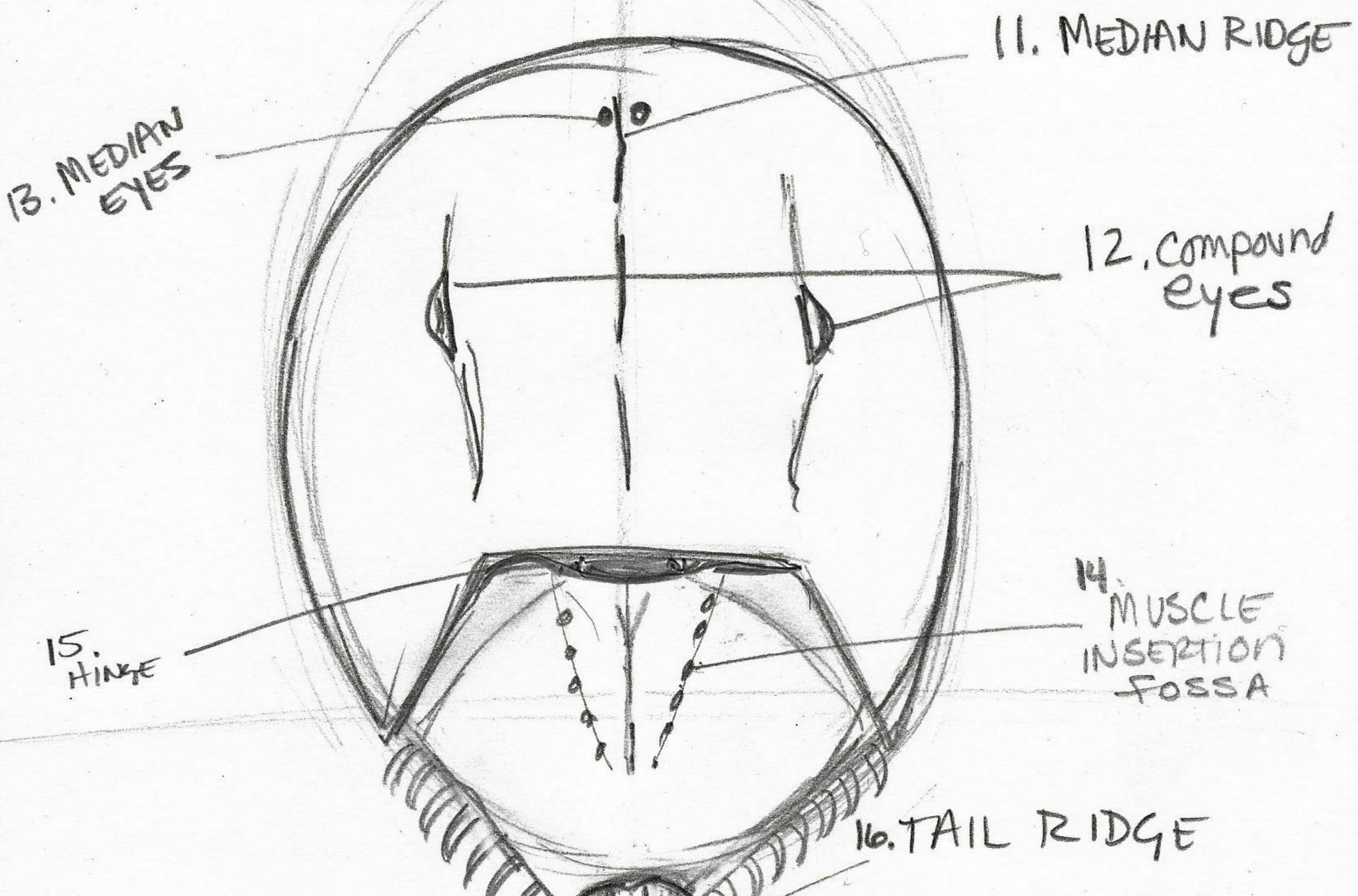
9. DRAW IN THE SPINES ON EITHER SIDE OF THE ABDOMEN

\* THERE ARE 8 SPINES ON BOTH SIDES OF THE ABDOMEN!

10. DRAW IN THE LATERAL EDGES, TWO LINES WITH A SLIGHT CURVE.

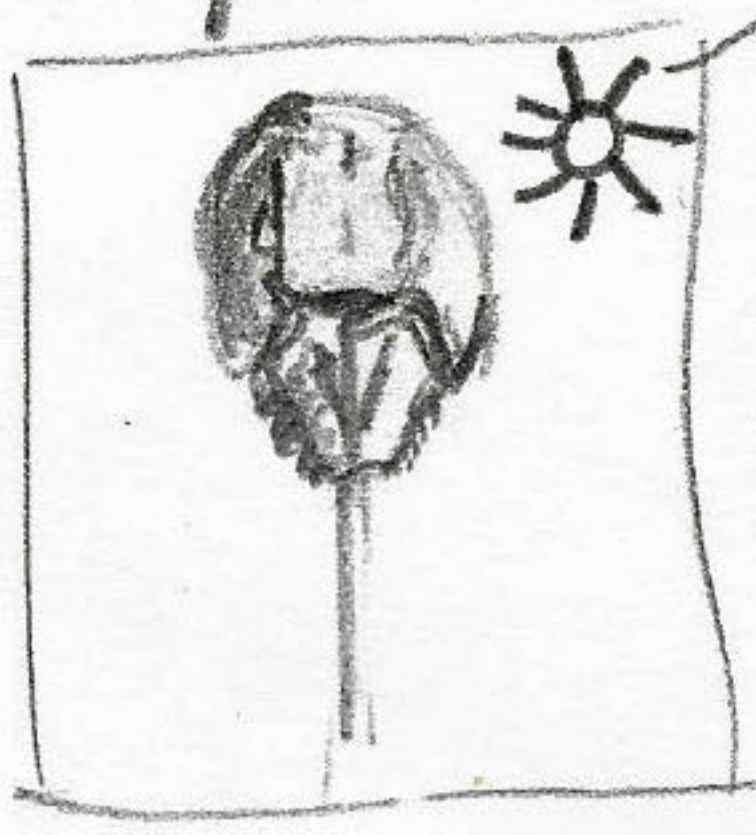


# ADD IN THE DETAILS!



17. ERASE ALL OF YOUR GUIDE LINES.

18. ADD SHADING & HIGHLIGHTS



- USE YOUR FINGER TIPS AS BLENDING TOOLS  
- USE YOUR ERASER TO ADD HIGHLIGHTS

