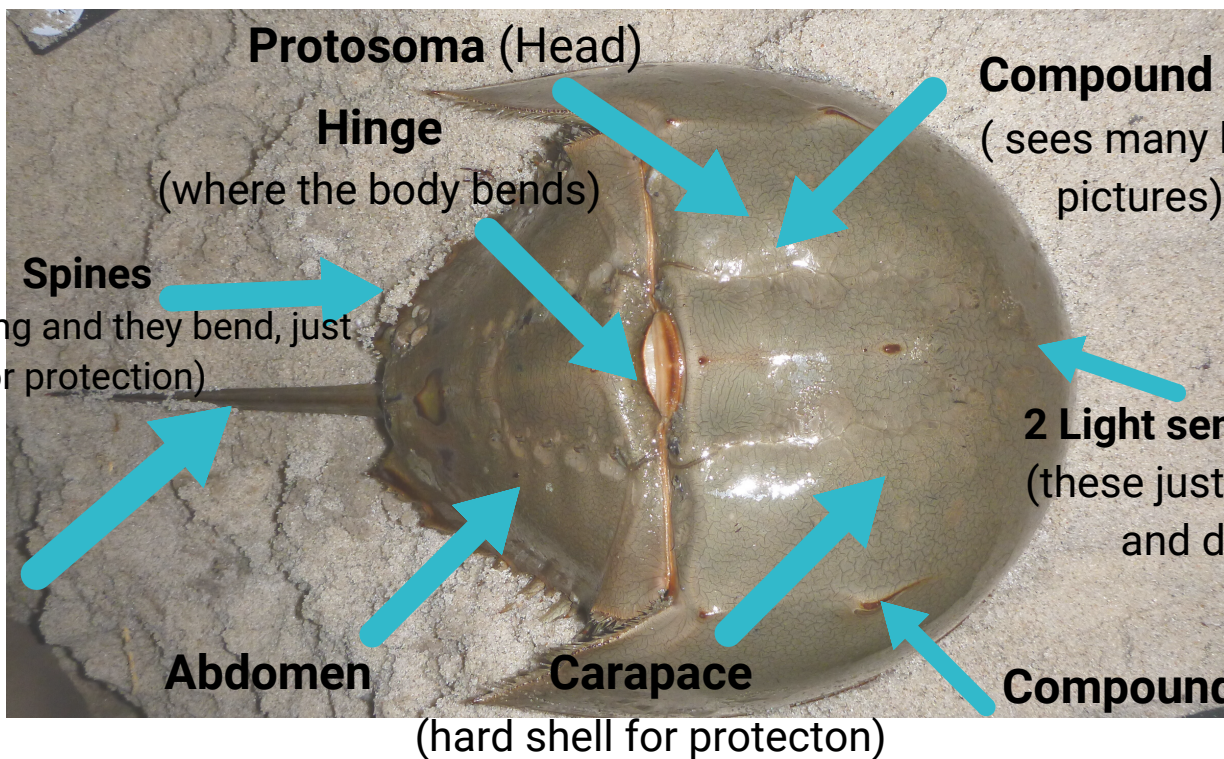




Horseshoe Crab Anatomy



Protosoma (Head)

Hinge
(where the body bends)

Compound eye
(sees many little pictures)

Spines
(do not sting and they bend, just for protection)

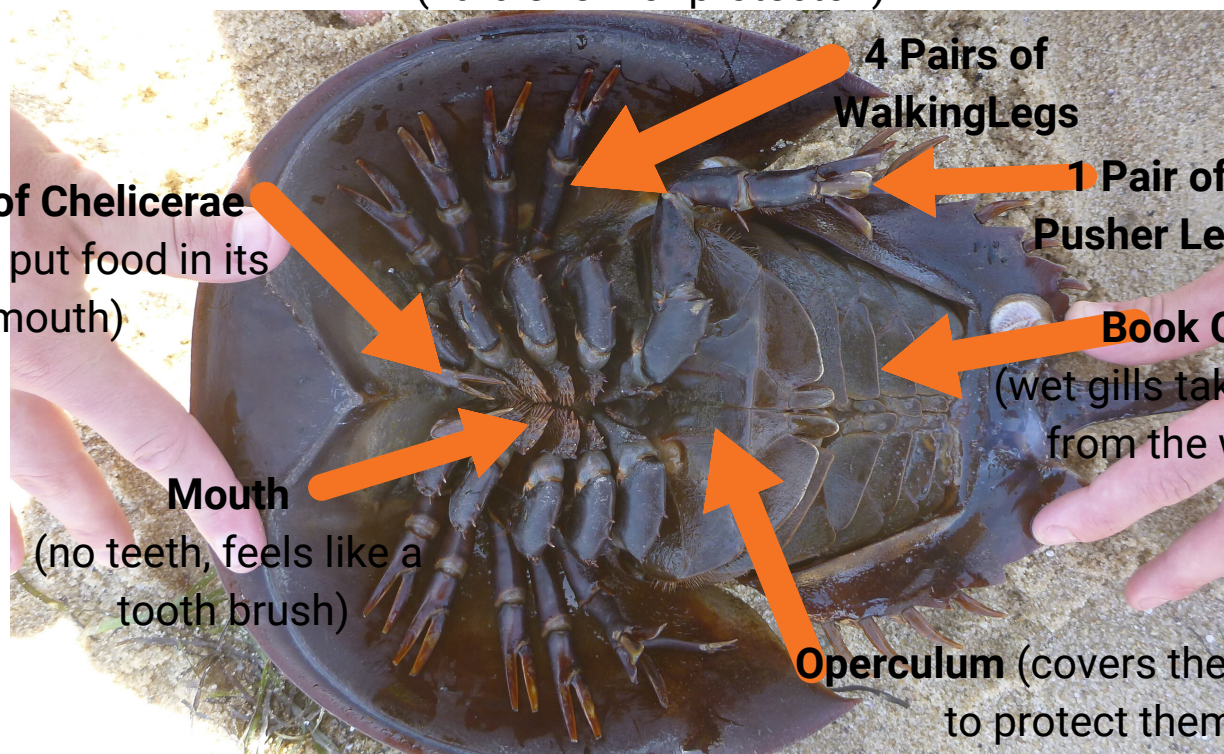
2 Light sensor eyes
(these just see light and dark)

Telson (Tail)

Abdomen

Carapace
(hard shell for protecton)

Compound eye



4 Pairs of Walking Legs

1 Pair of Pusher Legs

Book Gills
(wet gills take oxygen from the water)

1 Pair of Chelicerae
(used to put food in its mouth)

Mouth
(no teeth, feels like a tooth brush)

Operculum (covers the soft gills to protect them)

Photos courtesy of Justin Bopp

