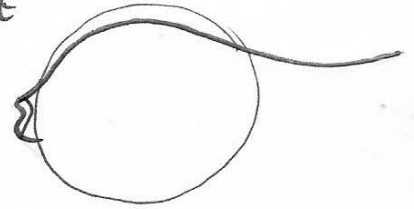


How to Draw Northern Puffers in Eelgrass.

1. IN THE LOWER LEFT CORNER DRAW A CIRCLE WHERE YOU WANT YOUR PUFFED PUFFER

2. ADD LIPS 1/2 WAY DOWN THE CIRCLE

3. FROM THE LIPS DRAW AN ANGLED LINE GOING UP THROUGH THE CIRCLE TO THE TOP AND THEN EXTEND THE LINE PAST THE CIRCLE TO CREATE THE TAIL END.

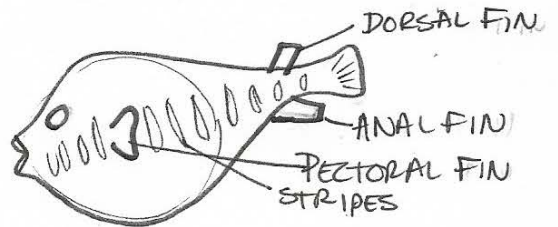


4. ADD IN THE TAIL FIN AND THE UNDERSIDE OF THE BELLY

5. DRAW IN THE DORSAL, ANAL, & PECTORAL FINS

6. ADD IN THE EYE

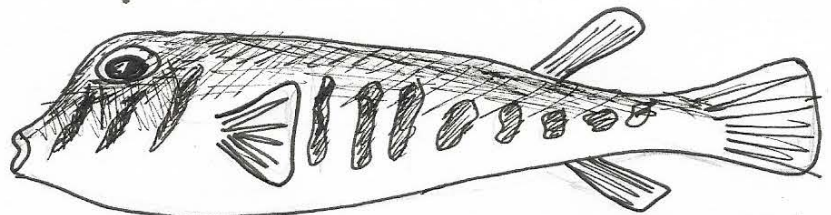
7. ADD IN THE STRIPES



8. TO MAKE PUFFERS NOT PUFFED UP START WITH AN OVAL AND FOLLOW STEPS 2 THROUGH 7

* TO MAKE FISH FARTHER AWAY DRAW THEM SMALLER!

9. ADD IN STRANDS OF EELGRASS. PUT A FEW IN FRONT OF YOUR FISH TO MAKE THEM SWIMMING THROUGH THE EEL GRASS.



10. ADD IN DETAILS & SHADING.

